

AUTOZYME™ ENA

Anti-Sm/RNP Well Pack

- **Simple and adaptable methodology**
- **Consistent interpretation of results**
- **Flexible - build your own profile with other AUTOZYME™ ENA products**
- **Uniform - identical incubations**
- **Detects antibodies to 68, 26, 25, 18 and 17 kDa proteins**

● **Indication**

AUTOZYME™ ENA Anti-Sm/RNP antibodies well pack is a sandwich immunoassay for the detection of antibodies to Sm/RNP complex antigen in human serum or plasma.

● **Summary and explanation of test**

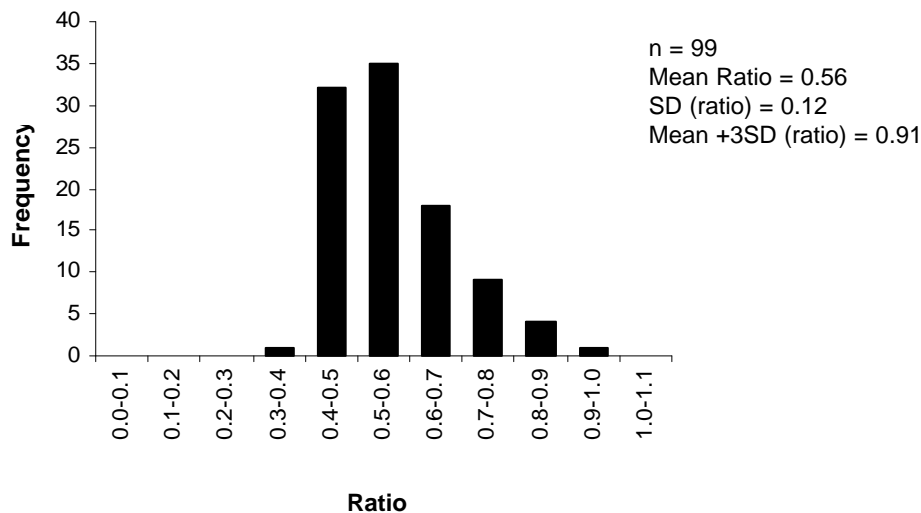
The AUTOZYME™ ENA method employs a unique antigen-coated microwell technology, which is ideal for the batch-screening of large numbers of samples for a range of auto-antibodies. The method utilises a non-competitive sandwich enzyme immunoassay system and is identical for all six antigens:

Ro (SS-A), La (SS-B), Sm, Sm/RNP, Jo-1 and Scl-70.

Anti-Sm/RNP antibodies appear as a clinical indication in 95-100% of patients with mixed connective tissue disease (MCTD), with a lower frequency in systemic lupus erythematosus (SLE).

This product must be used in conjunction with the AUTOZYME™ ENA bulk pack (Catalogue No: Z1000).

● **Reference ranges**



AUTOZYME™ ENA Anti-Sm/RNP Well Pack

Catalogue No. Z1400

Precision

Intra-assay precision (n=8)		Inter-assay precision (n=3)	
Mean	CV (%)	Mean	CV (%)
0.81	9.5	0.81	4.0

Correlation with commercial ELISA

n = 46		AUTOZYME™	
		+	-
EIA	+	21	1
	-	0	24

Overall agreement = 98%

Interfering analytes

No significant interference outside of the usual precision of the assay was detected with the following potential interferents:


Bilirubin	0.5 g/L
Haemoglobin	5.0 g/L
Ascorbic acid	1.0 g/L
Lipids	5 % (v/v)
human IgG ₁ κ myeloma serum	16 mg/mL
human IgM λ myeloma serum	4 mg/mL

Product Range

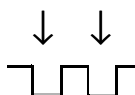
Code	Product	Test Size
Z1000	Bulk Pack	192
Z1100	Anti-Ro antibodies	32
Z1200	Anti-La antibodies	32
Z1300	Anti-Sm antibodies	32
Z1400	Anti-Sm/RNP antibodies	32
Z1500	Anti-Jo-1 antibodies	32
Z1600	Anti-Scl-70 antibodies	32

Test Procedure

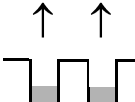
↓ ↓
10 µL sample
990 µL diluent
Dilute sample
1/100



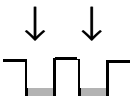
100 µL sample
↓ ↓
Incubate for
30 minutes



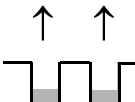
↑ ↑
Wash 3 times



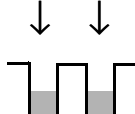
100 µL conjugate
↓ ↓
Incubate for
30 minutes



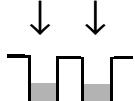
↑ ↑
Wash 3 times



100 µL substrate
↓ ↓
Incubate for
30 minutes



100 µL stopping
buffer
↓ ↓
Measure at
540nm to
560nm



Cambridge Life Sciences Ltd.
14 St. Thomas' Place, Cambridgeshire Business Park, Ely, Cambs CB7 4EX UK
Tel: 01353 645200 Fax: 01353 645250
email: sales@clsdiagnostics.com
www.cambridgelifesciences.co.uk