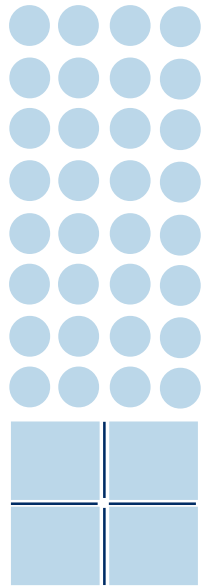


# MELISA™ ACL

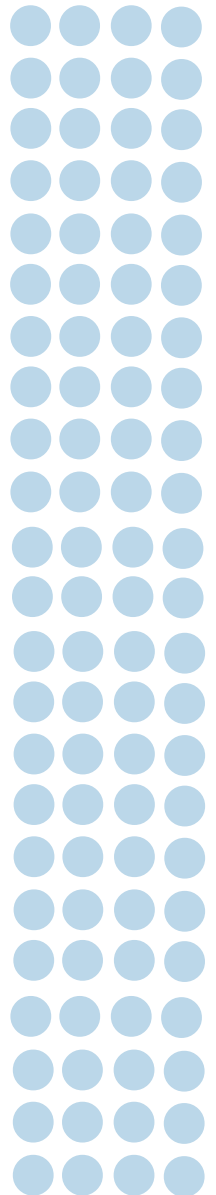
**M**ICROPIN **E**NZYME-**L**INKED  
**I**MMUNO**S**ORBENT **A**SSAYS FOR  
**A**NTI-**C**ARDIO**L**IPIN ANTIBODIES



CAMBRIDGE

LIFE

SCIENCES



## MELISA™

(Micropin Enzyme-Linked Immunosorbent Assay)

In contrast with conventional ELISA technology in which the immunological reaction takes place on the surface of microwells, MELISA™ uses a transferable solid phase system – micropins.

All reaction steps are performed in separate microwells. The immunological reactions and the enzyme substrate reaction occur on the surface of the MELISA™ pins. Thus, incubations are simultaneous and, as a result, there is no possibility of assay 'drift'.



The technology offers the following advantages:

- short incubation times
- simultaneous incubations – no assay drift
- simple washing – no extra equipment required
- colour-coded reagents
- liquid ready-to-use reagents
- long shelf-life

## Major Benefits

### ● **Reliable and Precise**

Stringent quality controlled manufacturing ensures that the performance and the integrity of the kit is maintained throughout a long shelf-life. The MELISA™ micropin technology ensures that each individual sample is treated in the same way, reducing assay drift. This gives consistent reproducibility and precision for better monitoring. Results can be used with confidence.

### ● **Specific and Sensitive**

Employs high quality purified antigen to ensure a high degree of specificity and provide confidence in diagnosis. This, coupled with high sensitivity and low minimum detectable concentrations, make these assays ideal and vital for patient monitoring.

### ● **Rapid and Easy to Use**

Assays are rapid with short incubation times saving valuable time. Simple instructions coupled with colour-coded and ready-to-use reagents make this an ideal assay.

### ● **Safe and Effective**

Non-isotopic detection makes it safe from the inherent hazards associated with handling radioisotopes. Availability of a range of assays makes it effective and suitable for volume screening and patient monitoring.

## MELISA™ - Anti-Cardiolipin Antibody (ACL) Determination

### ● Cardiovascular disorder, but what are the markers?

Multiple disease associations such as systemic lupus erythematosus (SLE) may involve deep leg thrombosis and stroke tendency. In such cases, raised levels of anti-cardiolipin antibodies (anti-CL) are characteristically present. Expectant mothers presenting with raised anti-CL levels risk losing their baby through intra-uterine death or spontaneous abortion.

### ● Early detection can save so much

Raised levels of anti-CL antibodies are clear markers for high risk cardiovascular events. Early and accurate anti-CL testing can indicate a requirement for prophylactic anti-coagulant or anti-platelet therapy. Similarly, therapy aimed at reducing anti-CL levels in high risk maternity patients can ensure full term pregnancy.

### ● A complete anti-CL profile is essential

Anti-CL IgG specific test results can facilitate the diagnosis of thrombotic disorders, thrombocytopenia and foetal loss. High levels in patients indicate a susceptibility to cerebrovascular disease.

Anti-CL IgM specific results correlate with anti-CL IgG levels and associated disease conditions in most cases. However, some patients can be anti-CL IgM positive only. This highlights the need to perform an anti-CL IgM test in parallel with anti-CL IgG test.

### ● The Total Solution

MELISA™ ACL, based on the sandwich ELISA principle, offers considerable advantages to the user:

- a range of assays for quantification of anti-CL (IgG and IgM) antibodies
- calibration traceable to the original Rayne Institute reference standards
- combination kits for the simultaneous detection of anti-CL IgG and anti-CL IgM
- employs ready-to-use, colour-coded reagents



### Product Range

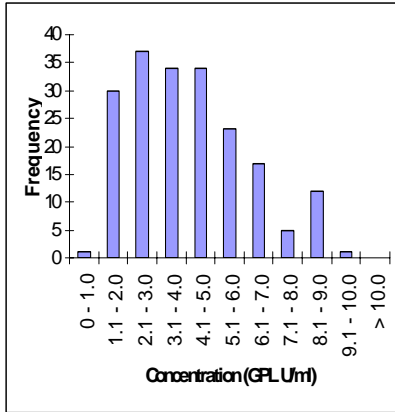
<i>Description</i>	<i>Code</i>
MELISA™ ACL IgG	M4596A
MELISA™ ACL IgM	M4696A
MELISA™ ACL Combination IgG/IgM	M4796A

## Technical Information

### Anti-CL IgG (Code: M4596A)

#### Reference range

Normal range < 8.1 GPLU/ml  
 Borderline 8.1 - 10.2 GPL U/ml  
 Positive > 10.2 GPL U/ml



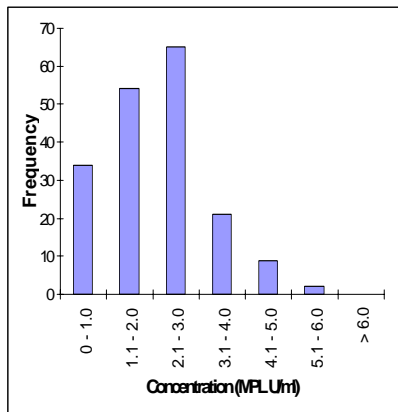
#### Precision

Intra-assay (n=20)	
Mean (GPL U/ml)	CV %
4.3	6.4
37.1	5.4
Inter-assay (n=16)	
Mean (GPL U/ml)	CV %
3.8	15.0
37.1	12.1

### Anti-CL IgM (Code: M4696A)

#### Reference range

Normal range < 4.3 MPL U/ml  
 Borderline 4.3 - 5.4 MPL U/ml  
 Positive > 5.4 MPL U/ml



#### Precision

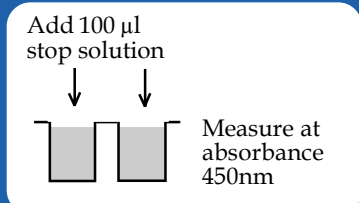
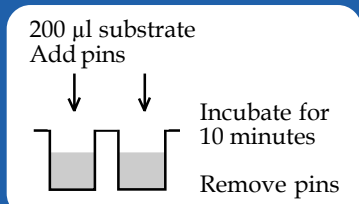
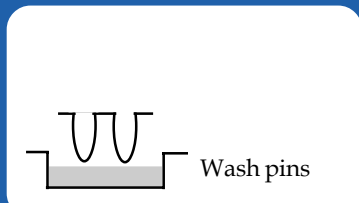
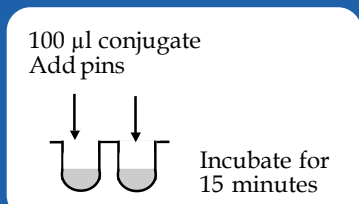
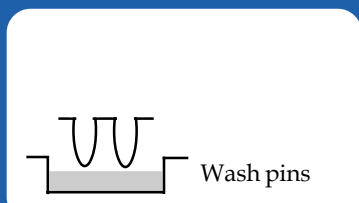
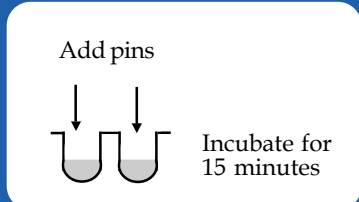
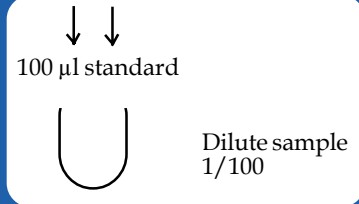
Intra-assay (n=20)	
Mean (MPL U/ml)	CV %
1.8	10.3
20.2	3.6
Inter-assay (n=16)	
Mean (MPL U/ml)	CV %
2.1	19.5
21.9	6.8

### Other MELISA™ Assays Available

Anti-thyroid antibodies (Tg and TPO)

Anti-native DNA antibodies

## Test Procedure



Cambridge Life Sciences Ltd

14 St. Thomas' Place, Cambridgeshire Business Park, Ely, Cambs CB7 4EX UK  
 Tel: +44(0)1353 645200 Fax: +44(0)1353 645250 e-mail: sales@clsdiagnostics.com

www.clsdiagnostics.com