

# BlueDot

## Novel immunodot system

Distributed in the UK exclusively by Cambridge Life Sciences Ltd.

- *Methodology - one patient, one strip, multiple antigens*
- *Easy interpretation - built-in cut-off control*
- *Validation on-strip - operator handling / reagent quality via built-in reaction control*
- *Practicality - no calibrators, no external control, no factor calculation*
- *Specificity - use of highly specific antigens*
- *Visualisation - antibody pattern allows quick clinical association*

### • Principle

**BlueDot** is a **novel immunodot** system using polyester supported nitrocellulose membrane strips coated with a comprehensive range of **highly specific antigens**. Antigen mixtures which contain a blue dye for in-process quality control are sprayed onto the membrane in "dot" form.

Each strip has a built-in **reaction control** for validation of correct handling.

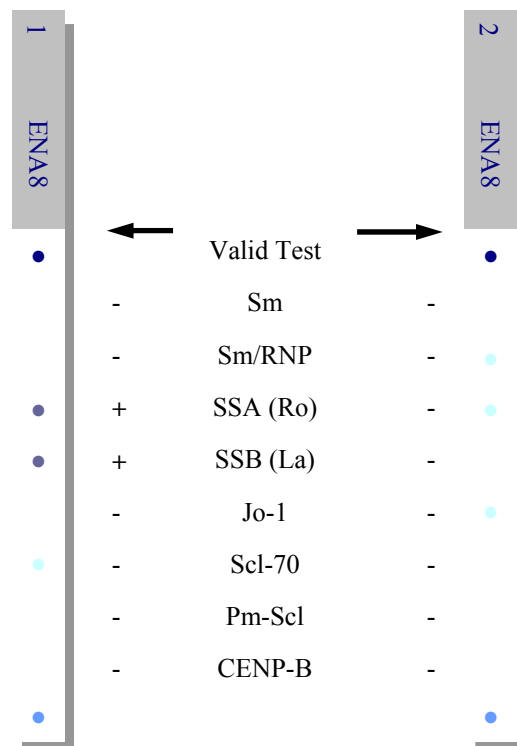
Each strip has a built-in **cut-off control** for easy and correct clinical interpretation.

### • Test interpretation

#### BlueDot Features

Strip number 1  
Product name ENA8  
Reaction control ●  
Antigens  
● Sm  
● Sm/RNP  
● SSA (Ro)  
● SSB (La)  
● Jo-1  
● Scl-70  
● Pm-Scl  
● CENP-B  
Cut-off control ●

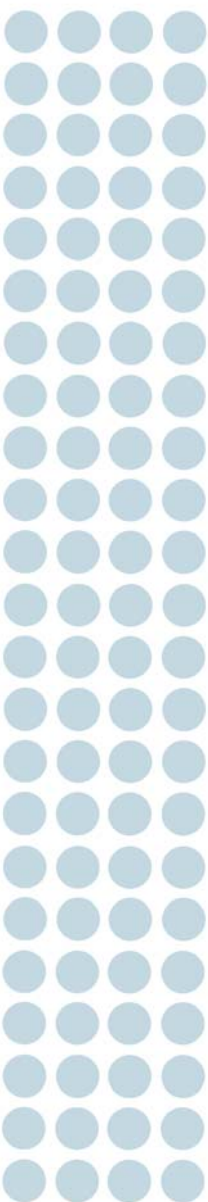
#### Examples of Interpretation



Positive Patient  
(SSA-SSB)

Negative Patient

- *Instructions for use and Safety Data Sheets available on-line at:  
<http://www.d-tek.be/download.php>*



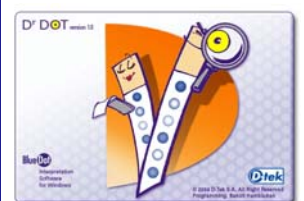
# BlueDot



Order Code	Product	Parameters
ACD-24	Actin IgG BlueDot - F-actin	1
ANA8D-24	ANA <sup>8</sup> IgG BlueDot - Sm; Sm/RNP; SSA(Ro); SSB(La); Jo-1; Scl-70; PM-Scl; CENP-A/B	8
ANA10D-24	ANA <sup>10</sup> IgG BlueDot - Sm; Sm/RNP; SSA(Ro); SSB(La); Jo-1; Scl-70; PM-Scl; Ku; CENP-A/B; PCNA	10
ANA12D-24	ANA <sup>12</sup> IgG BlueDot - Sm; Sm/RNP; SSA(Ro); SSB(La); Jo-1; Scl-70; PM-Scl; Ku; CENP-A/B; PCNA; Ribosome P (P0,P1, P2), RNP (68kD/A/C)	12
ANA12SD-24	ANA <sup>12</sup> IgG BlueDot - Sm; Sm/RNP; SSA(Ro); SSB(La); Jo-1; Scl-70; PM-Scl; Ku; CENP-A/B; PCNA; MI-2;RNP (68kD/A/C)	12
ANCAGD-24	ANCA <sup>+GBM</sup> IgG BlueDot - MPO ; PR3 ; GBM (Goodpasture antigen)	3
ANCAD-24	ANCA <sup>2</sup> IgG BlueDot - MPO ; PR3	2
ASCCD-24	ASCA IgA + IgG BlueDot - Saccharomyces cerevisiae (mannan)	1
ENDA-24	Celiac IgA BlueDot - Gliadin; tissue Transglutaminase	2
ENDG-24	Celiac IgG BlueDot - Gliadin; tissue Transglutaminase	2
CTD-24	Connectivitis IgG BlueDot - Nucleosome; Histones (total); Sm; Sm/RNP; SSA(Ro); SSB(La); Jo-1; Scl-70	8
CYD-24	Cytoplasm IgG BlueDot - M2 (Pyruvate dehydrogenase); Jo-1; Ribosome P(P0, P1, P2)	3
CY6D-24	Cytoplasm <sup>6</sup> IgG BlueDot - M2 (Pyruvate dehydrogenase); Jo-1; PL-7; PL-12; Ribosome P(P0, P1, P2) SRP	6
NUENAD-24	ENA <sup>+Nucleosome</sup> IgG BlueDot - Nucleosome; Sm; Sm/RNP; SSA(Ro); SSB(La); Jo-1; Scl-70	7
ENAD-24	ENA <sup>6</sup> IgG BlueDot - Sm; Sm/RNP; SSA(Ro); SSB(La); Jo-1; Scl-70	6
IFPCAD-24	Gastritis IgG BlueDot - Intrinsic Factor ; Parietal cell antigen (H <sup>+</sup> /K <sup>+</sup> ATPase)	2
GBD-24	GBM IgG BlueDot - GBM (Goodpasture antigen)	1
IFD-24	Intrinsic Factor IgG BlueDot - Intrinsic Factor	1
LID-24	Liver <sup>3</sup> IgG BlueDot - M2 (Pyruvate dehydrogenase); LKM1 (P450 2D6) ; LC1 (Formiminotransferase cyclodeaminase)	3
LISD-24	Liver <sup>5</sup> IgG BlueDot - F-actin; M2 ; LKM1 ; LC1 ; SLA (Soluble Liver Antigen)	5
LUD-24	Lupus IgG BlueDot - Nucleosome ; Histones (total) ; Sm ; Ribosome P (P0, P1,P2)	4
MID-24	M2 IgG+IgM BlueDot - M2 (Pyruvate dehydrogenase)	1
MI3D-24	Mitochondria DGDC-E2; BCOADC-E2; PDC-E2	3
BSD-24	Milk Intolerance IgG BlueDot - β-Lactoglobulin (cow's milk); Soya (purified soya proteins)	2
NUD-24	Nucleosome IgG BlueDot - Nucleosome	1
NUHISD-24	Nucleosome/Histones IgG BlueDot - Nucleosome; Histones (total)	2
PMS8D-24	Polymyositis/Scleroderma IgG BlueDot - Jo-1; PL-7; PL-12; Ku; PM-Scl; Scl-70; SRP; Mi-2	8
PMSD-24	Polymyositis/Scleroderma8 IgG BlueDot - Jo-1; PL-7; PL-12; Ku; PM-Scl; Scl-70	6

## Test procedure

- ✓ Place strips into the provided incubation tray - blue dots facing up
- ✓ Add 2 ml wash buffer to each well
- ✓ Incubate (shake) for 10 minutes
- ✓ Discard solution
- ✓ Add 1.5 ml sample diluent to each well
- ✓ Add 10 µl of patient sample to each well
- ✓ Incubate (shake) for 30 minutes
- ✓ Wash 3 minutes, repeat wash step 2 more times
- ✓ Add 1.5 ml conjugate to each well
- ✓ Incubate (shake) for 30 minutes
- ✓ Wash 3 minutes, repeat wash step 2 more times
- ✓ Add 1.5 ml substrate to each well
- ✓ Incubate (shake) for 10 minutes
- ✓ Wash 3 minutes
- ✓ Dry strips
- ✓ Read results
- ✓ Save results using Dr Dot software



Cambridge Life Sciences Ltd.  
 14 St. Thomas' Place, Cambridgeshire Business Park,  
 Ely, Cambs, CB7 4EX, UK  
 Telephone: +44 (0)1353 645200 Fax: +44 (0)1353 645250  
 E-mail: sales@clsdiagnostics.com  
 http://www.clsdiagnostics.com