

# K8003 PARACETAMOL 2 Reagent System

## Paracetamol (Acetaminophen) Enzyme

- 2 Reagent System consisting of Paracetamol Enzyme and Colour Reagent
- No interference from N-acetyl cysteine or Paracetamol metabolites
- No pipetting steps for Paracetamol Enzyme reconstitution
- Larger pack size reduces storage volume
- Protocols for automated analysers
- Claims and performance unchanged compared to K8002 3 reagent system

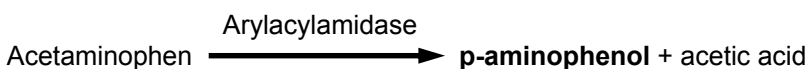
### • Indication

The paracetamol assay is an enzymatic assay for the detection and quantification of free paracetamol in human sera or plasma.

### • Summary and explanation of test

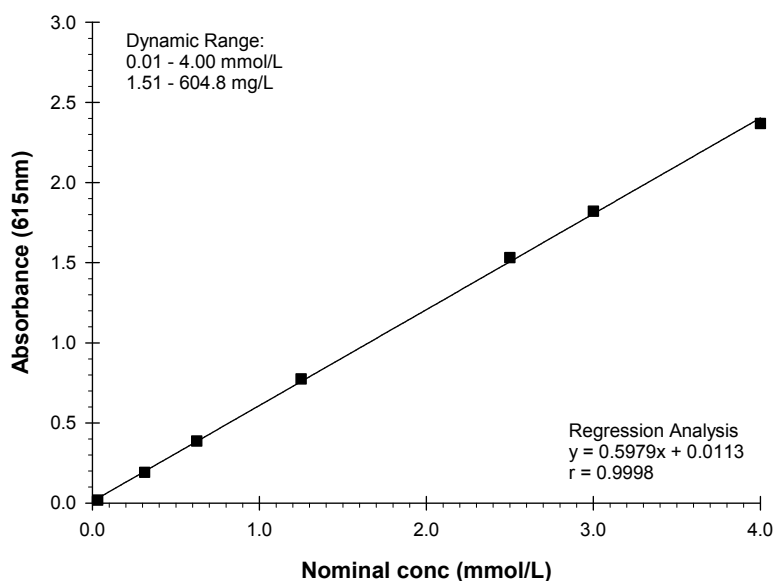
Paracetamol is a commonly used analgesic which, if taken in excessive amounts, can lead to toxic liver damage and, less commonly, to renal impairment.

The method is based on the use of an enzyme specific for the amide bond of acylated aromatic amines. It cleaves the paracetamol molecule, yielding p-aminophenol, which reacts specifically with o-cresol in ammoniacal copper solution to produce a blue colour. The assay is specific for the parent compound and does not detect paracetamol metabolites.



### • Linearity

K8003 Linearity Study



- Safety Datasheet & Protocols available on request.

CAMBRIDGE

LIFE  
SCIENCES

# Paracetamol Enzyme Assay Kit

Catalogue No. K8003

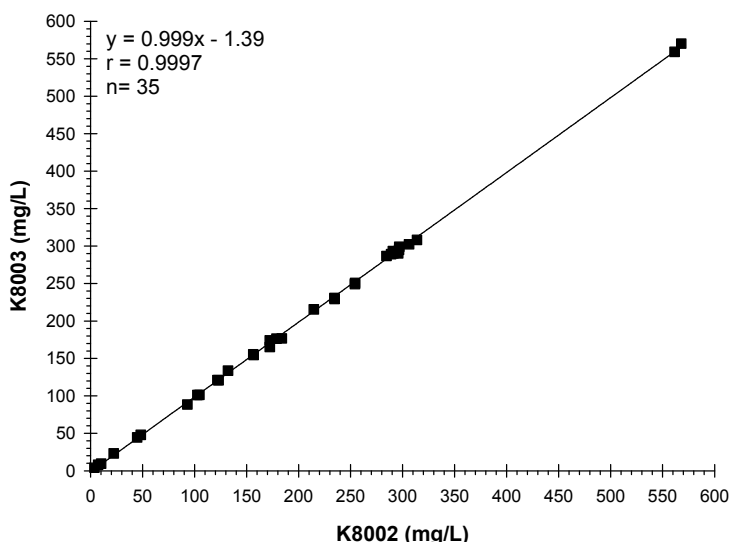


## • Precision

Intra-assay precision (n = 20)			Inter-assay precision (n = 20)		
Mean (mmol/L)	Mean (mg/L)	CV (%)	Mean (mmol/L)	Mean (mg/L)	CV (%)
0.20	30.2	2.4	0.23	34.8	2.6
0.37	55.9	1.1	0.41	62.0	1.4
1.17	176.9	1.0	1.18	178.4	1.7

## • Correlation

Paracetamol K8002 v K8003  
(NEQAS samples)



## • Recovery

Recovery of paracetamol added to human sera showed the following results:

Paracetamol		% Recovery
(mmol/L)	(mg/L)	
0.48	72.6	103.1
0.84	127.0	99.4
1.20	181.4	100.3
1.56	235.9	99.0
1.92	290.3	98.6

Cambridge Life Sciences Ltd.

14 St. Thomas' Place, Cambridgeshire Business Park,  
Ely, Cambs, CB7 4EX, UK

Telephone: +44 (0)1353 645200

Fax: +44 (0)1353 645250

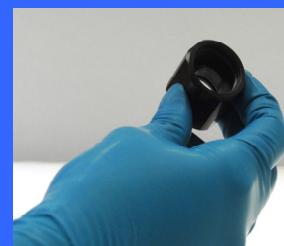
E-mail: [sales@clsdiagnostics.com](mailto:sales@clsdiagnostics.com)

<http://www.clsdiagnostics.com>

## Reconstitution of Enzyme



TAKE THE BOTTLE OF PARACETAMOL ENZYME AND ENZYME DILUENT



TAKE THE BLACK BOTTLE ADAPTOR



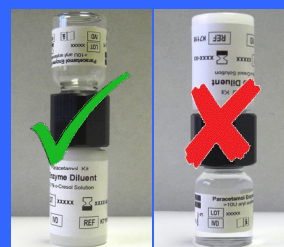
SCREW THE BOTTLE ADAPTOR ON TO THE BOTTLE OF ENZYME DILUENT



ENSURE THE BOTTLE ADAPTOR IS SCREWED ON TIGHTLY



SCREW THE BOTTLE OF PARACETAMOL ENZYME ON TO THE BOTTLE ADAPTOR AND MIX



ENSURE THE SOLUTION IS CONTAINED WITHIN THE 20ML BOTTLE BEFORE REMOVING THE BOTTLE ADAPTOR

